



3D Phineas

ASSEMBLY INSTRUCTIONS



GETTING STARTED

MATERIALS:

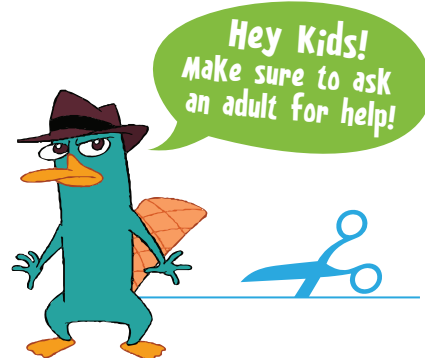
- Scissors
- Glue
- Ruler
- Butter knife
- Pencil
- 2 or more sheets of heavyweight paper

- 1** Print out pages 1 and 2 and allow to dry.
(Make sure to get a parent or guardian's permission before printing.)

- 2** Score all pieces: Run the back side of a butter knife firmly along all dashed lines. Use a ruler as a guide along straight lines.

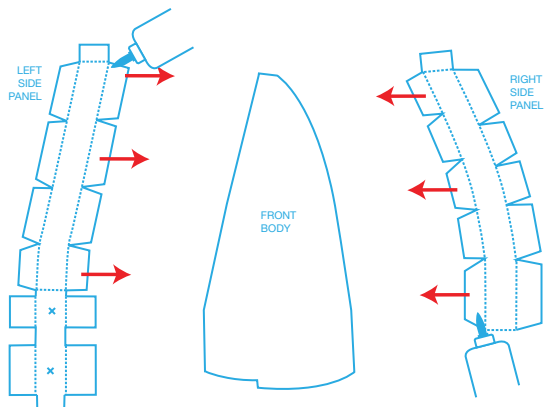


- 3** Using scissors, carefully cut along solid grey lines.

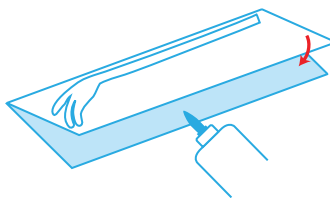


ASSEMBLE YOUR CHARACTER

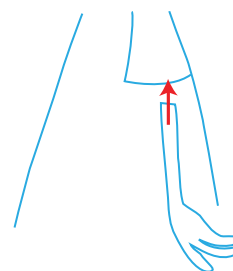
- 4** Before you make Phineas' body, make sure you've cut slits along the grey lines of his sleeves. Starting at the shorts, glue the right side panel to the right side of the front body piece. Then, starting at the neck, glue the left side panel to the left side of the front body piece.



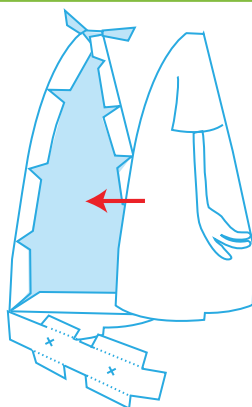
- 5** Fold both of the arm pieces in half and glue together. Cut out arms along solid lines.



- 6** Apply glue to the arm tabs and insert each arm into the slit under each sleeve. Glue tabs down to the inside of the shirt.

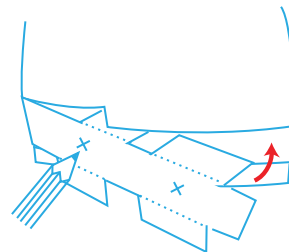


- 7** To form the rest of Phineas' body, glue the back body piece to the right and left side panel tabs. Glue the remaining two yellow tabs to form the base of the neck.



- 8** Gently take the tip of a pencil and poke through the "X"s on the bottom of the shorts.

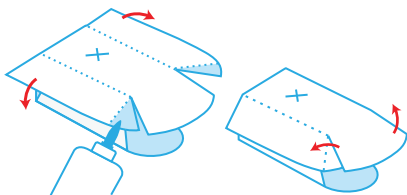
Apply glue to the bottom tabs and glue in place between the front and back body pieces to form the bottom of Phineas' shorts.



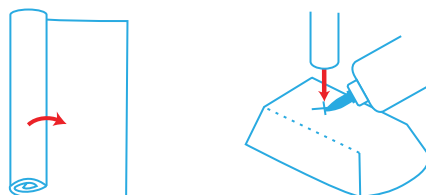
Watch Phineas and Ferb on Disney XD!

ASSEMBLY CONTINUED

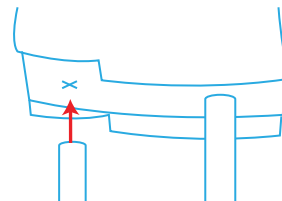
- 9** Create his shoes by first gently poking a pencil through the "X"s. Line up the front edges of the shoe to the edge of the shaded area and glue. Fold the side tabs under and glue to the inside panels.



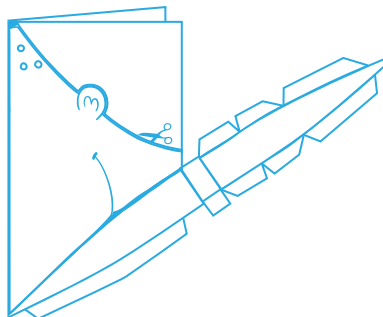
- 10** To create legs, first fold each piece on the score line, then roll into a thin tube (slightly smaller than the width of a pencil). Apply a strip of glue inside the edge of the roll and hold in place until dry. Insert the legs into holes on the top of shoes, with the blue socks meeting the shoes. Add glue to secure.



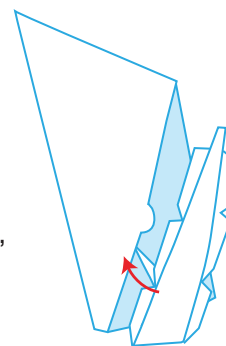
- 11** Insert legs into the bottom of Phineas' shorts. Add glue to secure.



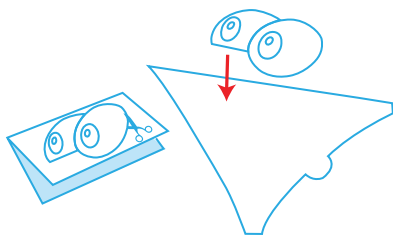
- 12** To assemble the head, fold in half on score line. Cut out the remainder of head art along yellow line and around ears.



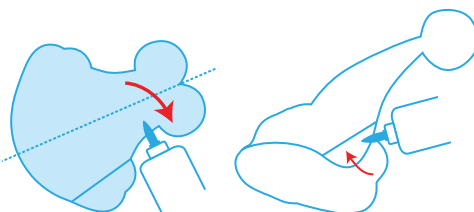
Glue head panels to the inside of the back of head (where the ears are) one at a time, aligning as you go to form a slight curve.



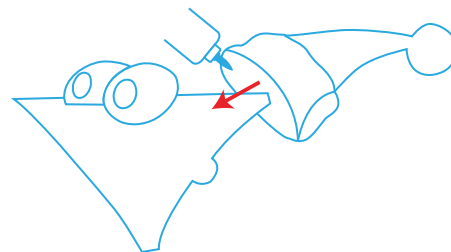
- 13** Fold over the eyes piece and cut along solid grey line. Apply glue to the inside of eyes and affix to top of the head so that the back eye is glued to the head and the front eye sits on top of the head.



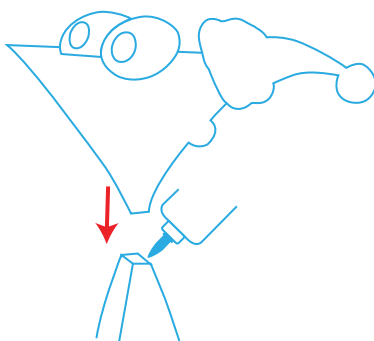
- 14** Fold the hat piece in half and cut along solid grey lines. Glue together the top portion (above the score line). Wrap the bottom edges of the hat around and glue in place at the line.



- 15** Put on Phineas' hat. Add glue to secure, if desired.



- 16** Glue head onto top of body. You may need to hold in place till dry.

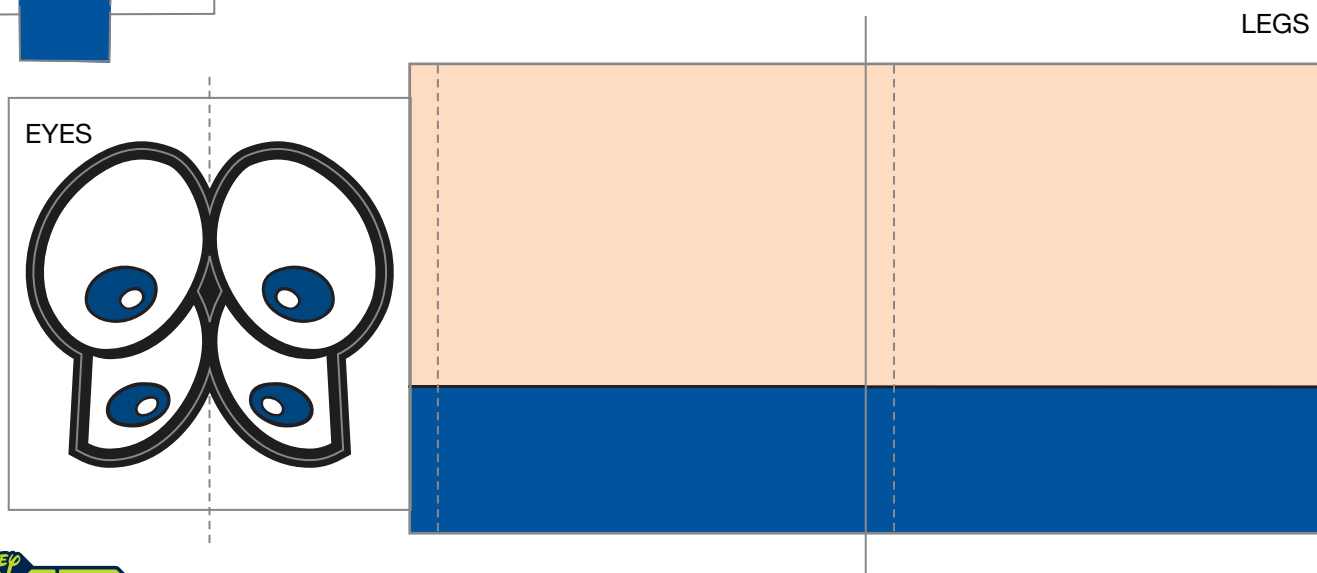
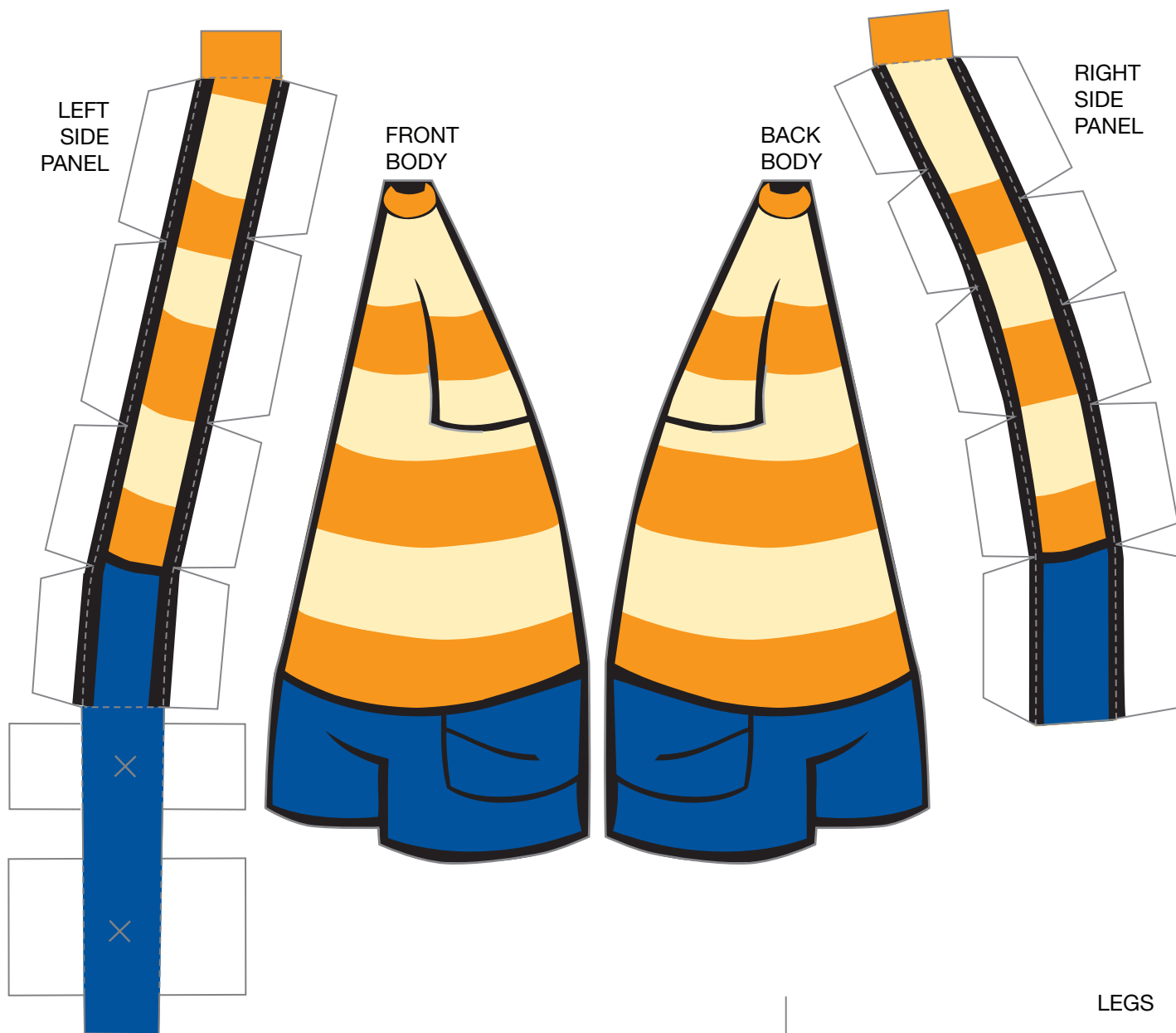


You're done!



Watch Phineas and Ferb on Disney XD!

3D PHINEAS CHARACTER

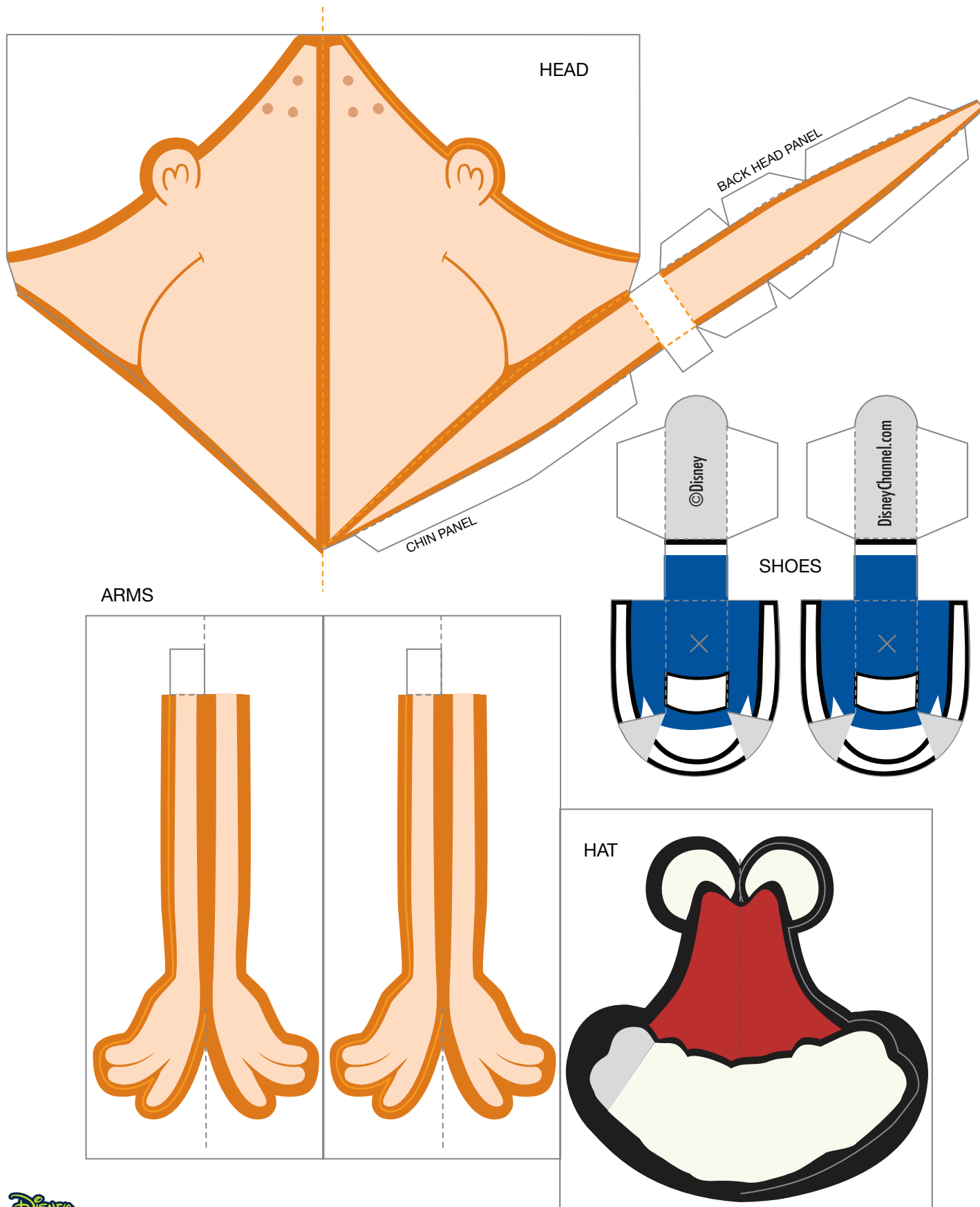


Watch Phineas and Ferb on Disney XD!

DisneyXD.com/Holiday

©Disney

3D PHINEAS CHARACTER



Watch Phineas and Ferb on Disney XD!

DisneyXD.com/Holiday

©Disney