

# THE MOST MAGICAL EXPERIENCE AFLOAT



  
**Disney** CRUISE LINE  
DISCOVER UNCHARTED MAGIC<sup>SM</sup>





Choose *Disney Cruise Line* for your incentive, corporate or charter program and you're choosing an unforgettable, magical experience aboard the first ships built and run by the dreammakers at Disney. *Disney Cruise Line* is an all-new way to enjoy the magic and the legendary quality of Disney aboard magnificent ships that recall the glory days of cruising. Come, and discover the Cruise Line that reinvented cruising.

We offer four options for your program:

- 3-DAY BAHAMAS CRUISE
- 4-DAY BAHAMAS CRUISE
- 7-DAY CARIBBEAN CRUISE
- 7-DAY LAND AND SEA VACATION

## ON LAND AND AT SEA, EVERYTHING HAPPENS LIKE MAGIC.

Disney is in the business of making dreams come true with personalized support services unlike any you've ever experienced. Whether you choose a seven-day *Walt Disney World*® Resort / *Disney Cruise Line* vacation or a three-, four-, or seven-day cruise-only package, your *Disney Cruise Line* Group Coordinator will handle all your needs including:

- Disney venues on land and at sea available for private themed parties and events
- Disney entertainment for your functions, including famous Disney characters
- Disney golf utilizing the five championship *Walt Disney World*® Resort courses for customized group tournaments
- Disney convenience including charging and master account privileges
- Disney Event Productions offering A/V equipment, set and environmental design, speech writing, speaker searches, multi-media productions and special effects
- *Disney Institute* programming including personal and professional development seminars



# THREE-, FOUR-, AND SEVEN-DAY CRUISES

Your guests will set sail aboard *Disney Magic* or *Disney Wonder* for a delightful cruise to Nassau or to St. Maarten and St. Thomas. Every *Disney Cruise Line* adventure also includes a stop at *Castaway Cay*, Disney's own private island escape. Each ship is a floating world of unsurpassed Disney service with fantastic dining and entertainment along with completely separate areas and activities for families, children and adults. Areas are also available on board for your group functions. Chart a course for a new world of excitement with the magic and wonder of *Disney Cruise Line*.

## THREE-DAY CRUISE TO NASSAU, THE BAHAMAS

- Package includes stateroom accommodations, food and all entertainment on the ship and at Disney's *Castaway Cay*

Day 1	Set sail from Port Canaveral, Florida
Day 2	Port of Nassau, The Bahamas
Day 3	<i>Castaway Cay</i> , Disney's private island paradise
Day 4	Arrive back at Port Canaveral, Florida

## FOUR-DAY CRUISE TO THE BAHAMAS

- Package includes stateroom accommodations, food and all entertainment on the ship and at Disney's *Castaway Cay*

Day 1	Set sail from Port Canaveral, Florida
Day 2	Port of Nassau, The Bahamas
Day 3	<i>Castaway Cay</i> , Disney's private island paradise
Day 4	Day at sea or (on selected voyages) visit Freeport
Day 5	Arrive back at Port Canaveral, Florida

## SEVEN-DAY CARIBBEAN CRUISE TO ST. MAARTEN AND ST. THOMAS

- Package includes stateroom accommodations, food and all entertainment on the ship and at Disney's *Castaway Cay*

Day 1	Set sail from Port Canaveral, Florida
Day 2	Day at sea
Day 3	Day at sea
Day 4	St. Maarten
Day 5	St. Thomas, with excursions to St. John
Day 6	Day at sea
Day 7	<i>Castaway Cay</i> , Disney's private island paradise
Day 8	Arrive back at Port Canaveral, Florida

Note: Ground transportation to and from a Central Florida airport is included with all Disney air supplements.





# THE SEVEN-DAY LAND AND SEA ADVENTURE

Send your group on a magical journey that starts on land at the *Walt Disney World*® Resort and moves out to sea for a delightful cruise to The Bahamas. Your guests will enjoy three or four days of unlimited visits to all Disney Theme Parks or attend events at one of Disney's unparalleled conference or convention facilities. They'll stay at a beautifully themed Disney hotel where one check-in takes care of both their land and sea accommodations. Then, the adventure continues aboard the *Disney Wonder* as they cruise to The Bahamas and to *Castaway Cay*, Disney's own private island escape.

## THE SEVEN-DAY *WALT DISNEY WORLD*® AND *DISNEY CRUISE LINE* PACKAGE

- 3- or 4-day accommodations before your cruise at a selected *Walt Disney World*® Resort hotel
- Unlimited admission (except for activities/events separately priced) to: *Magic Kingdom*® Park; *Epcot*®; *Disney-MGM Studios*; *Disney's Animal Kingdom*® Theme Park; *Downtown Disney* Pleasure Island; *Disney's Blizzard Beach*, *Typhoon Lagoon*, *River Country* Water Parks; *DisneyQuest*®; and *Disney's Wide World of Sports*™ Complex
- Unlimited use of the *Walt Disney World*® transportation system
- 3- or 4-day *Disney Cruise Line* cruise to The Bahamas

### Days 1-3

Company events and all the fantasy and fun of the *Walt Disney World*® Resort

### Day 4

Set sail from Port Canaveral, Florida

### Day 5

Port of Nassau, The Bahamas

### Day 6

*Castaway Cay*, Disney's private island paradise

### Day 7

Day at sea or (on selected voyages) visit Freeport

### Day 8

Arrive back at Port Canaveral, Florida

Note: Ground transportation to and from a Central Florida airport is included with all Disney air supplements.



# ON LAND, A WORLD OF NON-STOP FUN AND EXCITEMENT

Whether at a club, a hotel, a convention center or a theme park, there are great venues for your meetings and receptions all over *Walt Disney World*® Resort. And when your company event is over, it's time to get down to some

serious fun. Guests on the seven-day land and sea package will stay at a selected *Walt Disney World*® Resort hotel and receive unlimited admission to the Disney Theme Parks. One day, they're in a boat plummeting down Splash Mountain at

the *Magic Kingdom*® Park, and the next they're in a safari vehicle crossing an African savannah inhabited by the exotic animals at *Disney's Animal Kingdom*® Theme Park. There's a day of discovery at *Epcot*®, and a day of movie thrills awaits them at the *Disney-MGM Studios*. Plus, there are 99 holes of championship golf, tennis, three water parks and two full-service spas. Add fantastic dining, shopping and nighttime entertainment at the *Downtown Disney* area and you've got a trip packed with more amazement than anywhere else on the planet.





# THEIR ADVENTURE BEGINS IN THE WORLD'S GREATEST RESORT

## Theme Parks

- *Magic Kingdom®* Park
- *Epcot®*
- *Disney-MGM Studios*
- *Disney's Animal Kingdom®* Theme Park

## Water Parks

- *River Country*
- *Typhoon Lagoon*
- *Blizzard Beach*



## Nightlife & Shopping

- *Downtown Disney* Pleasure Island - eight nightclubs, live bands and a nightly New Year's Eve celebration
- *Downtown Disney* Marketplace - boutiques, restaurants and the world's largest Disney character shop in a waterfront setting
- *Downtown Disney* West Side - House of Blues®, Virgin™ Megastore, Wolfgang Puck® Cafe, Bongos Cuban Cafe™, interactive fun at *DisneyQuest®* and much more!
- *Cirque du Soleil®* - A stunning blend of circus art and street entertainment in the breathtaking show, *La Nouba™*



## Golf

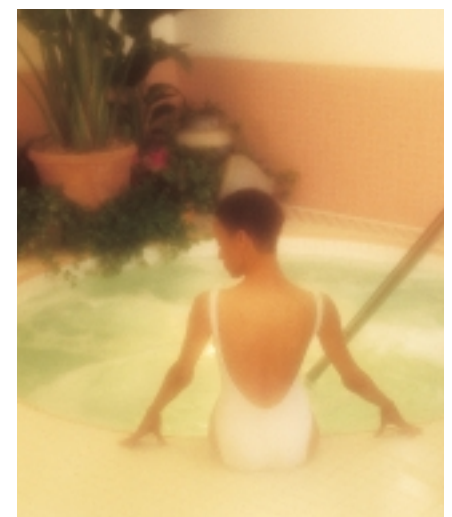
Host to two national tour tournaments with courses that rank among the nation's best

- Five championship courses
- 9-hole walking course
- PGA Pros
- Tournament management department

## Spas

Offering a range of body treatments and European-designed skin therapies

- *Disney's Grand Floridian Spa* and Health Club
- *The Spa at the Disney Institute*





## AT SEA, TWO SHIPS UNLIKE ANY OTHERS AFLOAT

Come aboard two ships inspired by the glorious ocean liners of the past. Discover elegance, comfort and creativity at every turn, and enjoy a host of fantastic features that are oceans away from the ordinary.

- Disney's own private island paradise, *Castaway Cay*, where the ship docks right at the island and where guests will enjoy a snorkeling lagoon and separate beaches for families and adults without kids
- Spacious *Disney Cruise Line* staterooms that offer substantially more space than most other cruise ships (An incredible 73% of staterooms are outside rooms with ocean views and 44% of these have private verandahs.)
- Three separate restaurants – each featuring great food and an unsurpassed level of personalized service and attention highlighted by a service team that rotates with your guests from one unique dining experience to the next
- Amazing Disney entertainment with three original Disney musical stage shows, current films, nighttime entertainment district and the *ESPN® Skybox* – the world's only floating sports bar
- Separate areas just for kids with fantastic programming and activities geared to five different age groups



SOMETIMES YOU JUST WANT TO DO THINGS FOR YOURSELF.



# ACTIVITIES AND PAMPERING RESERVED EXCLUSIVELY FOR ADULTS

Aboard *Disney Cruise Line* a new kind of magic unfolds for even the most discriminating adult travelers. These areas and activities are designed for the exclusive enjoyment of our adult passengers:

- *Vista Spa & Salon*
- Adult pool and whirlpools
- *Palo*, serving Northern Italian cuisine
- Nighttime entertainment district
- Professionally hosted wine tastings
- Private beach and *Grouper Pavilion* on *Castaway Cay* are perfect for all kinds of group activities and events
- Culinary Seminars
- Speaker Series



# DISNEY CRUISE LINE

## PORT INFORMATION / ITINERARY

Home Port: Port Canaveral, Florida  
 Destination: Nassau and *Castaway Cay*, The Bahamas, St. Maarten, St. Thomas

## SHIP PROFILE

Names: *Disney Magic* and *Disney Wonder*  
 Company: Magical Cruise Company, Limited  
 Originally Built: 1998  
 Country of Registry: The Bahamas  
 Speed: 21.5 knots ( 24 maximum )  
 Radio Call Sign: C6PT7-Magic  
 Telephone Number: 1-888-322-8732  
 Facsimile Magic: 011-874-330-851-611  
 Facsimile Wonder: 011-874-330-845-711  
 Crew: 950  
 Officers: Multinational  
 Hotel and Dining Staff: Multinational  
 Engine and Deck Staff: Multinational  
 Children's Counselors: American/Multinational  
 Cruise Staff: American/Multinational

## SIZE / CAPACITY

Tonnage: 83,000  
 Length: 964 feet  
 Beam: 106 feet  
 Draft: 25  
 Passenger Decks: 11  
 Elevators: 12  
 Lifeboats: 20  
 Life Rafts: 55  
 Capacity: 2,400 (1,750 double occupancy)  
 Space Ratio: 35.4 (48.3 double occupancy)

## SHIP INFORMATION

Fin Stabilizers: 2  
 Bow Thrusters: 3 - 1,800 kilowatts per/thruster  
 Stern Thrusters: 2 - 1,800 kilowatts per/thruster  
 Sulzer Diesel Engines: 5-16 cylinder  
 General Electric Propulsion Motors: 2-19 megawatts

## ACCOMMODATIONS

Walter E. Disney and Roy O. Disney Suites: 2  
 Two Bedroom Suite: 2  
 One Bedroom Suite: 16  
 Family Suite: 82  
 Deluxe w/ Verandah: 276  
 Deluxe Outside: 247  
 Deluxe Inside: 96  
 Standard Inside: 156  
**Total Inside Staterooms:** 252  
**Total Outside Staterooms:** 625

## STATEROOM DIMENSIONS

Walter E. Disney and Roy O. Disney Suites: 1,029 sq. feet  
 Two Bedroom Suite: 945  
 One Bedroom Suite: 614  
 Family Suite: 304  
 Deluxe w/ Verandah: 268  
 Deluxe Outside: 226  
 Deluxe Inside: 214  
 Standard Inside: 184  
 Disabled - Door Dimensions: 33.5"  
 Standard - Door Dimensions: 25.5"

## STATEROOM AMENITIES

Bath Robes (Royal Suites, One and Two Bedroom Suites) Individual Climate Control  
 Personal Daily Itinerary Remote Control Television  
 Selected Disney Publications Service Directory & Room Service Menu  
 Hair Dryer Telephone with Voice Mail  
 In-Room Safe Vanity Area with Sinks  
 Tub and Showers

## PUBLIC ROOMS & FACILITIES

**Theatres**  
*Walt Disney Theatre\**: 977 seats  
*Buena Vista Theatre\**: 268 seats

**Conference Rooms**  
*Steamboat Willie*: 590 sq. feet  
*Peter Pan*: 367 sq. feet  
*Fantasia*: 430 sq. feet  
 Total: 1,387 sq. feet

**Merchandise:** 5,500 sq. feet  
*Team Sports Shop*  
*Treasure Ketch*  
*Mickey's Mates*  
*Up Beat*  
*Shutters*

**Children's Areas:** 15,000 sq. feet  
*Disney's Oceaneer Club*: (3-8 years old)  
*Disney's Oceaneer Lab*: (9-12 years old)

**Dining Experiences:** 1,464 seats  
*Palo\** (Adult Only): 138 (Alternative Restaurant)  
*Lumière's*: 442  
*Animator's Palate\**: 442  
*Parrot Cay*: 442  
*Triton's*: 442

**Poolside Snack Bars**  
*Topsider Buffet*: 626 seats  
 Indoor: 294 seats  
 Outdoor: 332 seats  
*Beach Blanket Buffet*: 626 seats  
 Indoor: 294 seats  
 Outdoor: 332 seats

**Lounges**  
*ESPN® Skybox\**: 75 seats  
*Common Grounds* (Teen Lounge): 72 seats  
*Studio Sea\** (Family Lounge): 294 seats  
 Theater lobby bars: 24 seats  
*Promenade Lounge\**: 249 seats

**Nighttime Entertainment**  
*Beat Street*: 482 seats  
*Rockin' Bar D\**: 251 seats  
*Off Beat\**: 153 seats  
*Sessions\**: 78 seats  
*Route 66*: 626 seats  
*WaveBands\**: 251 seats  
*Barrel of Laughs\**: 153 seats  
*The Cadillac Lounge\**: 78 seats

**Health and Fitness Areas**  
 3 Distinct Swimming Pools  
 Adult only, family and sports activities

Basketball Court

Jogging Track

*Vista Spa* (spa, salon and fitness center) 9,000 sq. feet

## ADDITIONAL AMENITIES & SERVICES

24-hour Room Service  
 Arcade  
 Baby Sitting  
 Character Appearances  
 Children's Programs  
 Guest Services  
 Laundry Facilities - self service  
 Laundry Services - valet  
 Medical Facilities/Infirmary  
 Photo Processing  
 Shore Excursions

## OUT ISLAND EXPERIENCE

Disney's *Castaway Cay*

*\* Facilities are also available as function space.*



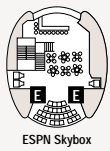
Deck 11

Deck 10

Deck 9

Deck 8

Deck 7



ESPN Skybox

# DISNEY MAGIC AND DISNEY WONDER

## STATEROOMS

All staterooms have tub and shower, remote control color TV, ample closet space, in-room safe, hair dryer, phone with voice-mail messaging and individual climate-control.

These plans are typical configurations. Other stateroom accommodations available.

FORWARD



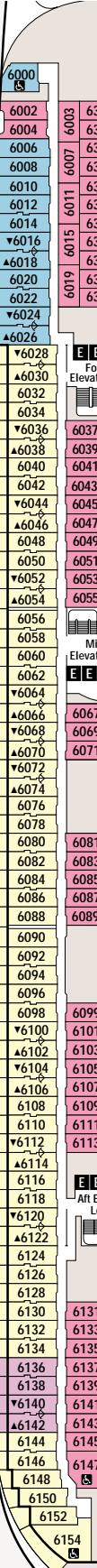
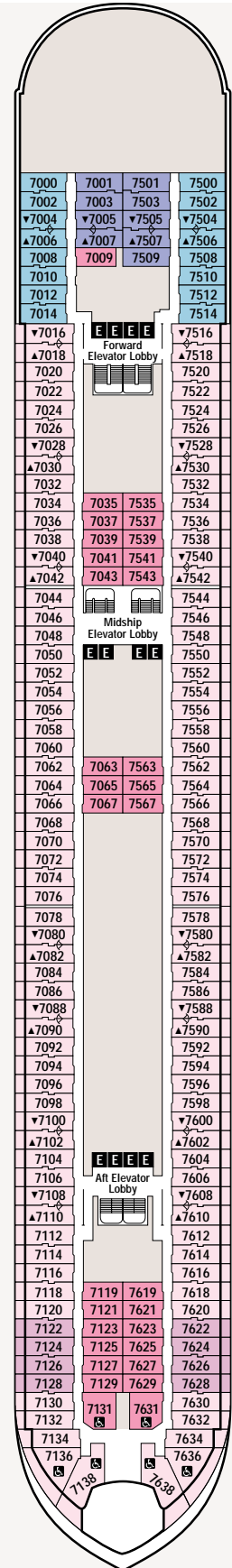
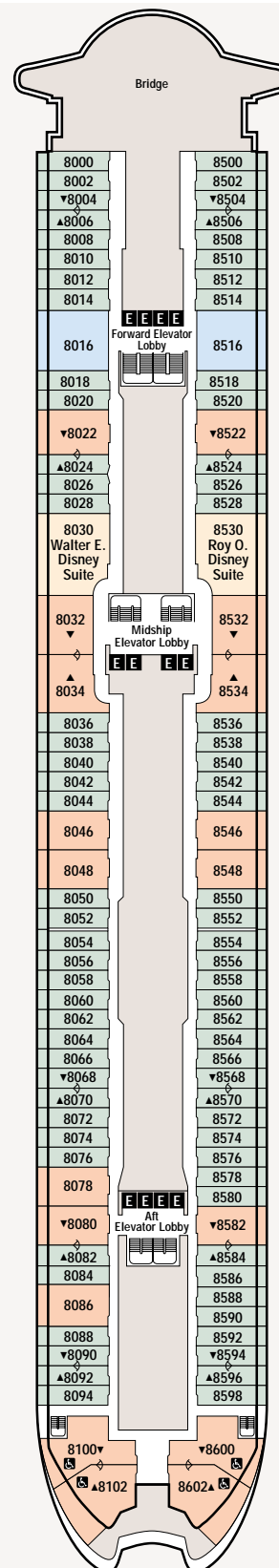
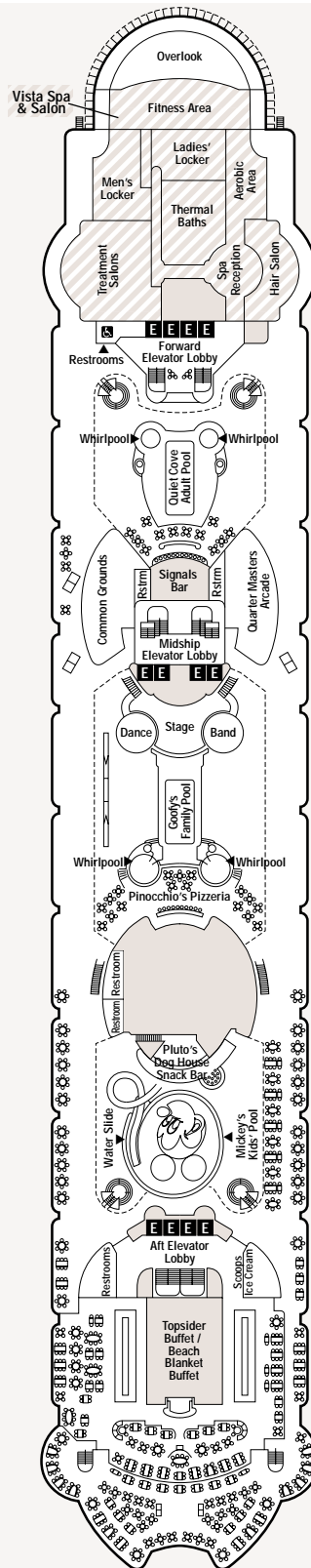
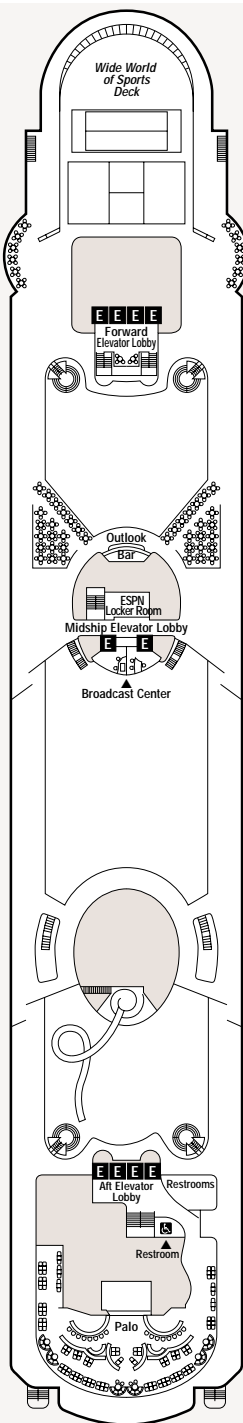
Accessible Staterooms

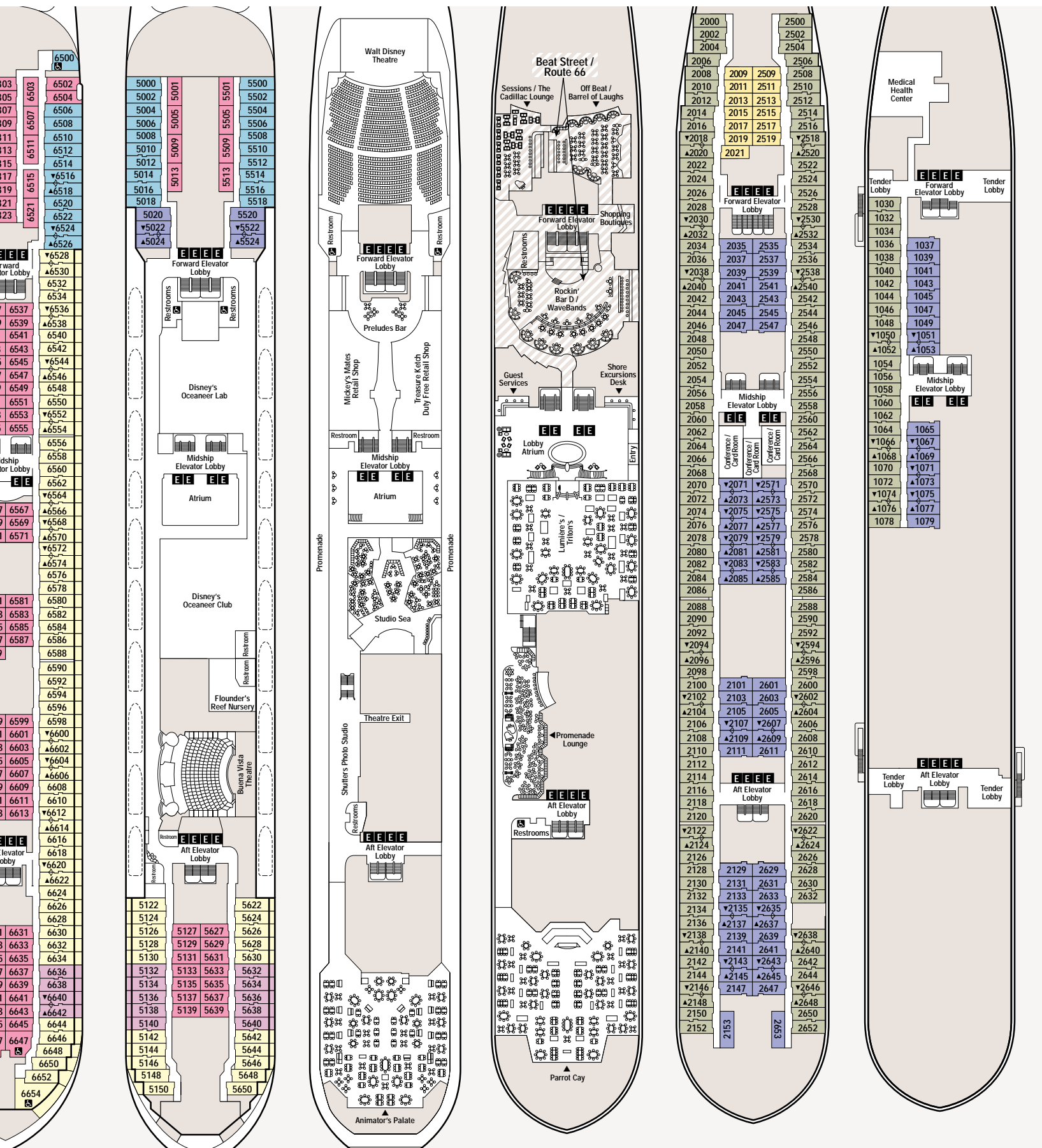


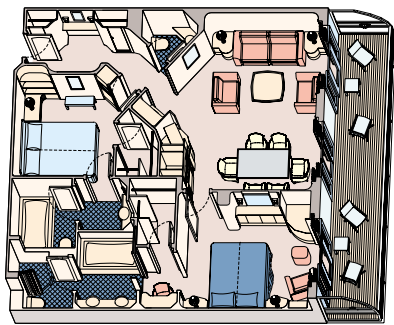
Elevator



Connecting Staterooms

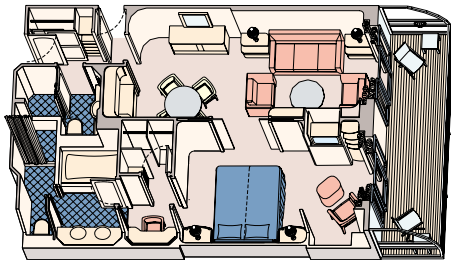






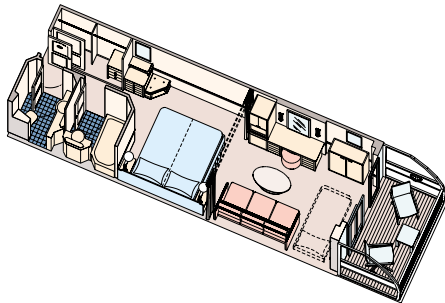
### 2 Bedroom Suite Category 2

Two bedrooms with queen-size beds, two and a half bathrooms, whirlpool tub, living area with convertible sofa, walk-in closets, wet bar, VCR, private verandah, Concierge service (Sleeps 5) 945 sq. ft.



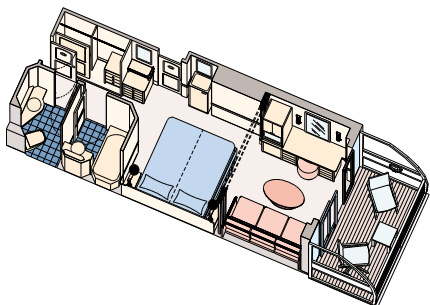
### 1 Bedroom Suite Category 3

Queen-size bed, living area with double convertible sofa, wall pull-down bed, two bathrooms, walk-in closet, wet bar, VCR, verandah, Concierge Service (Sleeps 4, some sleep 5) 614 sq. ft.



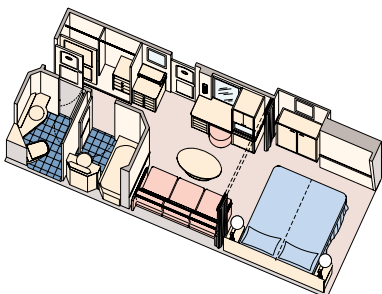
### Family Suite Category 4

Queen-size bed or two twin beds, single convertible sofa, and wall pull-down bed, privacy divider, split bath, private verandah (Sleeps 4, some sleep 5) 304 sq. ft.



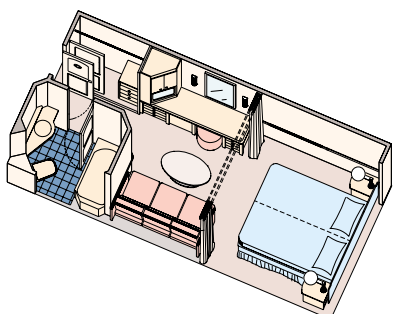
### Deluxe Stateroom w/Verandah Category 5 & 6

Queen-size bed or two twin beds and single convertible sofa, privacy divider, split bath (Sleeps 3, some sleep 4) 268 sq. ft.



### Deluxe Inside Stateroom Category 10

Queen-size bed or two twin beds and single convertible sofa, privacy divider, split bath (Sleeps 3, some sleep 4) 214 sq. ft.



### Standard Inside Stateroom Category 11 & 12

Queen-size bed or two twin beds and single convertible sofa, privacy divider, bath (Sleeps 3, some sleep 4) 184 sq. ft.

CATEGORY	SHIP ACCOMMODATIONS	RESORT ACCOMMODATIONS
1	Royal Suite with Verandah Sleeps 5.	<b>Deluxe Flagship Resort Hotel</b> <i>Disney's Grand Floridian Resort &amp; Spa</i>
2	2 Bedroom Suite with Verandah Sleeps 5.	
3	1 Bedroom Suite with Verandah Sleeps 4, some sleep 5.	
4	Family Suite with Verandah Sleeps 4, some sleep 5.	<b>Deluxe Resort Hotels</b> <i>Disney's Beach Club Resort</i> <i>Disney's BoardWalk Inn</i> <i>Disney's Contemporary Resort</i> <i>Disney's Polynesian Resort</i> <i>Walt Disney World Swan</i> <i>Walt Disney World Dolphin</i>
5	Deluxe Stateroom with Verandah Sleeps 3, some sleep 4.	
6	Deluxe Stateroom with Verandah Sleeps 3, some sleep 4.	
7	Deluxe Stateroom with Navigator's Verandah † Sleeps 3.	
8	Deluxe Oceanview Stateroom Sleeps 3, some sleep 2 or 4.	<b>Moderate Resort Hotels</b> <i>Disney's Dixie Landings Resort</i> <i>Disney's Port Orleans Resort</i> <i>Disney's Caribbean Beach Resort</i>
9	Deluxe Oceanview Stateroom Sleeps 3, some sleep 4.	
10	Deluxe Inside Stateroom Sleeps 3, some sleep 2 or 4.	
11	Standard Inside Stateroom Sleeps 3, some sleep 2 or 4.	
12	Standard Inside Stateroom Sleeps 2, some sleep 3.	

Staterooms that sleep 4 or more guests utilize a pull-down berth.  
† Nautical touches on an enclosed private verandah; partially obstructed view.

# WELCOME ABOARD TO A NEW WORLD OF FUN AND RELAXATION

From restaurants to stage shows, comedy clubs to sophisticated jazz lounges, from massages to interactive game shows, your guests are cruising on spectacular ships that float on fun, and where getting away from it all is the ultimate destination.



## FANTASTIC ROTATION DINING

Instead of dining in the same place night after night, guests enjoy a different dining experience each night they're at sea. *Animator's Palate* offers artfully prepared California cuisine in a room that magically transforms from black and white to color during the course of the meal. *Lumière's* offers elegant five-course dining aboard *Disney Magic*. *Triton's* aboard

*Disney Wonder* is an aquatic palace specializing in seafood. *Parrot Cay* features delicious tropical cuisine, and *Palo*, reserved exclusively for adults, offers an elegant setting high atop the ship and a menu of Northern Italian cuisine along with stunning panoramic ocean views.

## THREE DISNEY THEATRICAL PRODUCTIONS AND CURRENT MOVIES

The magnificent *Walt Disney Theatre* is home to three original Disney theatrical productions with Broadway-quality staging, stories and special effects. The *Buena Vista Theatre* plays current films as well as animated Disney classics. Aboard *Disney Cruise Line*, your guests will find excitement wherever they look. From a company whose heart and soul is entertainment, you'd expect nothing less.





## CLUBS AND LOUNGES

*Beat Street* on *Disney Magic* and *Route 66* aboard *Disney Wonder* are exciting, nighttime entertainment districts designed exclusively for adults. Guests can move from a comedy club to a rock club to an intimate piano bar. *The Promenade Lounge* is another great entertainment spot that features live music.

## THE SPA AND FITNESS EXPERIENCE

The *Vista Spa & Salon* is 8,500 square feet of pampering and indulgence with massage, aromatherapy treatments, Roman tubs and a delightful tropical rain shower. There's also a state-of-the-art fitness center featuring personal trainers and the latest Cybex equipment.

## SPORTS ONBOARD AND ON TV

The *Wide World of Sports™* Deck has basketball and paddle tennis while the *ESPN® Skybox* is a floating sports bar televising major sporting events as they happen!



# CHART A COURSE FOR THE ISLANDS

## Port of Nassau, The Bahamas

Guests on three- and four-day cruises aboard the *Disney Wonder* and our seven-day land and sea package will enjoy quaint, colorful, colonial Nassau where a choice of exciting shore excursions awaits from snorkeling trips to rides in glass bottom boats or complete tours of the island. Shop the Straw Market or take a ferry over to the casinos. It's a full day in port

with a whole island just waiting to be discovered. You can also make special arrangements for unique group experiences during shore excursions on the island, including a casino night or customized group golf tournaments.



## St. Maarten, St. Thomas and St. John

Come aboard *Disney Magic* for our newest cruise experience – an exciting 7-day Caribbean adventure. Your group will sail to the exotic ports of St. Maarten and St. Thomas with excursions to St. John and enjoy the world-renowned white-sand beaches and turquoise waters of a lush, Caribbean paradise. Discover a world of island fun including all kinds of water sports, sightseeing and duty-free shopping. It's the magic of a Disney cruise with a Caribbean twist. Special arrangements can also be made for unique group experiences during shore excursions.



# NEXT STOP, DISNEY'S OWN PRIVATE ISLAND

Every cruise aboard *Disney Cruise Line* includes a visit to our very own island in The Bahamas, *Castaway Cay*. Early in the morning the ship docks right at the island for a special day of fun and relaxation. Our private paradise in the sun features a 70-acre snorkeling lagoon, separate beaches for families and adults only, separate play areas and programs for kids, massage cabanas, boating, cocktails at *Heads Up* bar and a bountiful barbecue lunch. The *Grouper Pavilion* on *Castaway Cay* is the ideal venue for a group event. Organized group activities include private beach parties, scavenger hunts and mini-Olympics.





## SPECTACULAR SPACES FOR MEETINGS, PRESENTATIONS AND PRIVATE EVENTS

When your speakers take center stage at the *Walt Disney Theatre*, they'll share the spotlight with one of the most dramatic meeting venues afloat. Designed with luxurious appointments, full theatrical lighting and sound equipment, and 977 extraordinarily comfortable seats, the *Walt Disney Theatre* brings every audience to its feet every time. If it's hi-tech video and audio effects you want, you won't have far to look. Our *Buena Vista Theatre* has been outfitted with all of the sound and video technology the most current films require, and it's all available to make your on-board presentation larger than life. A full line of audio/visual services is also available to accommodate any additional special requests. For more intimate gatherings, the conference center offers the ambiance of the most richly detailed of captain's quarters, full-service catering and a service team dedicated to your event and exceeding your expectations.



- *Walt Disney Theatre*- 977 seats
- *Buena Vista Theatre*- 268 seats
- *Conference Center*- 1,387 square feet

FOR MORE INFORMATION,  
PLEASE CALL YOUR MEETINGS

SPECIALIST OR THE

*DISNEY CRUISE LINE*

GROUP/INCENTIVE AND  
CHARTER DEPARTMENT AT

(407) 828-3074

[disneymeetings.com](http://disneymeetings.com)



SHIPS' REGISTRY: THE BAHAMAS  
CST# 1022229-10

©Disney

