



## Rosetta's Clover Frame

A fun project that celebrates Rosetta's favorite season: Spring!



**Things you need:** Ruler, 6 sticks or twigs at least 7-inches in length (approximately 1/4-inch diameter), 4 sticks at least 8-inches in length (approximately 1/4-inch diameter), yarn or twine, scissors, 4 rubber bands or tape.

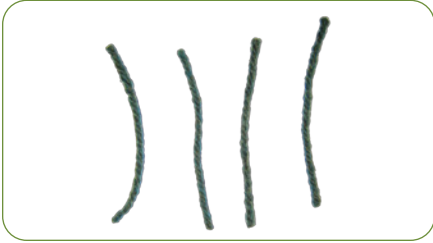


Finished Frame

# Rosetta's Clover Frame

## Instructions

1. Cut 4 pieces of 5-inch long string.



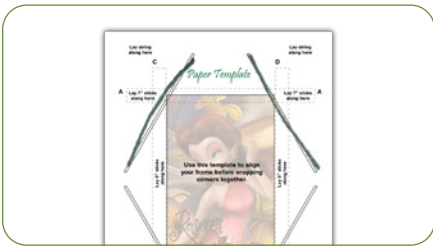
2. Divide the sticks into matching pairs. You should have 3 pairs of 7-inch sticks and 2 pairs of 8-inch sticks.



3. Put a rubber band or tape around each pair, but leave one of the 7-inch pairs unbound.



4. Align the 4 pieces of string on the paper template.



5. Lay one of the bound pairs of 7-inch sticks on the paper template where the "A" markings appear.



6. Lay the other bound pair of 7-inch sticks on the paper template where the "B" markings appear.



7. Lay one of the bound pairs of 8-inch sticks on top of the 7-inch sticks aligned with the "C" markings on the paper template.



8. Lay the other bound pair of 8-inch sticks on top of the 7-inch sticks aligned with the "D" markings on the paper template. These will create the vertical sticks in the frame.



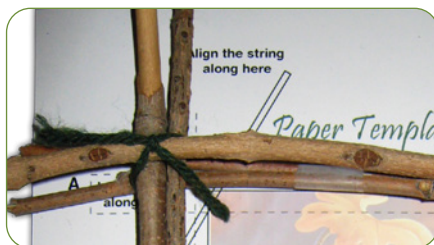
9. From the unbound pair of 7-inch sticks, lay one of the sticks across the 8-inch sticks aligned with where the "A" markings appear.



10. Lay the last stick across the 8-inch sticks aligned with where the "B" markings appear. These will create the horizontal sticks in the frame.



11. One by one, pull each end of the strings up around the layers of 7-inch sticks in order to bind them all together.



12. Using the remainder of your ball of string, bind the frame tight by wrapping around and over all corners. Don't forget to cut off the rubber bands or tape once the frame is complete.



# Rosetta's Clover Frame



Use these clovers to decorate your frame,  
or decorate your frame with real clovers!



# Rosetta's Clover Frame



You can use this portrait for your frame, or use your own photo! To place the image into the frame, slip the image between the horizontal side of the frame. You can also use tape to secure the photo.

**Paper Template**

Align the string along here

Align the string along here

**A** Lay 7" sticks along here

Lay 8" sticks along here

Use this template to align your frame before tying your corners together with string.

Lay 8" sticks along here

Lay 7" sticks along here

**B** Lay 7" sticks along here

Align the string along here

Align the string along here

**C**

**D**

**D**

**A**

© Disney