

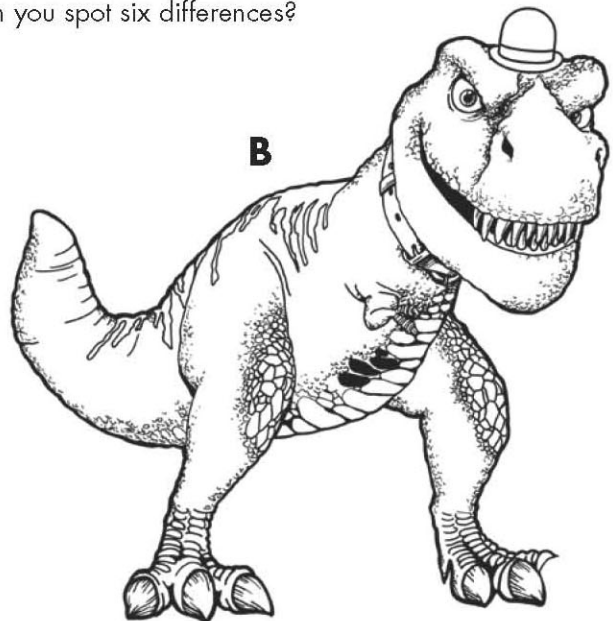
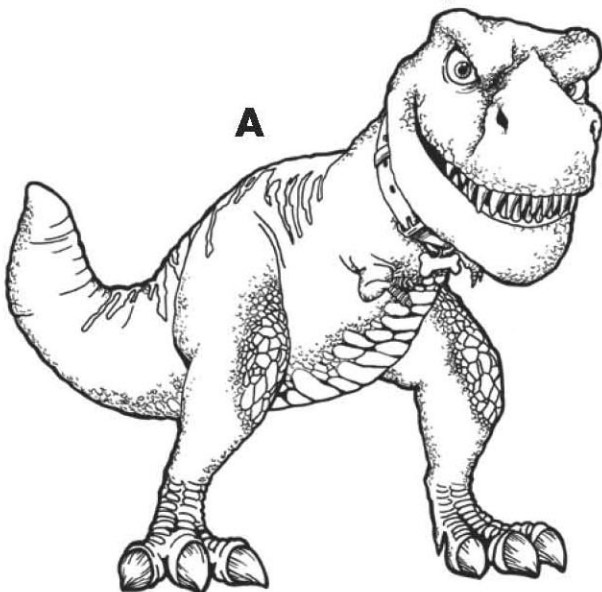
# THE SHOW MUST GO ON

The Frog Band is ready to start the show, but Frankie isn't onstage yet. Help Frankie find the way to his spotlight by leading him through the maze to the stage.



# T-REX TROUBLE

Tiny is the only prehistoric dinosaur living in the future. These two pictures of Tiny might look the same, but they are different. Can you spot six differences?



Answers: Dinosaur B is different - 1. Some scales on his chest are black. 2. The border hat was added. 3. The horn on his chest is missing. 4. Horn missing. 5. Leg missing from collar. 6. One arm is missing.