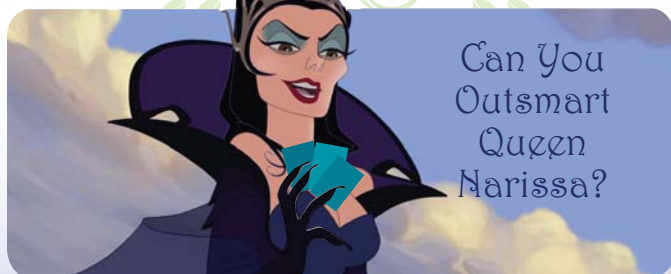


ENCHANTED

See what happens to the magical, animated fairy tale characters of Andalasia when Prince Charming, the beautiful princess Giselle, the evil Queen Narissa and lots of furry friends find themselves in live-action, modern-day New York City!



Leap into action with special *Enchanted* group activities.



Your own *Enchanted* Evening!



Visit the Enchanted Island!



Come see *Enchanted*.
Find out how.



Learn more about *Enchanted*.
Read the story.

ENCHANTED

Film Synopsis



Enchanted is a classic Disney animated fairy tale combined with a modern, live-action comedy. Featuring an all-star cast, the film follows the beautiful princess Giselle (Amy Adams) as she is banished by the evil Queen Narissa (Susan Sarandon) from her magical, musical, animated land and finds herself in the gritty reality of the streets of modern-day Manhattan.



Chaos and hilarity ensue as Giselle and her would-be savior, the perfect fairy tale prince, Edward (James Marsden), attempt to navigate in a world they don't understand. It all begins when Giselle sees a castle on a billboard and thinks it is an easy portal home, and Edward does battle with the New York City bus he assumes is a smoke-spewing dragon.



But when Giselle begins to fall in love with a charmingly flawed divorce lawyer (Patrick Dempsey) who has come to her aid — even though she is already promised to her “prince charming” — she has to wonder: Can a storybook view of romance survive in the real world?

Throughout the film, classic Disney fairy tale storylines and images are presented with modern twists. Fans of Disney animated tales such as *Snow White*, *Sleeping Beauty*, and *Cinderella*, and adventure films like *Aladdin* and *Lion King* will love the clever spoofs that provide unique twists on their best-known elements.



“Enchanted is full of humor and heart and entertains the way movies are meant to, completely wrapping us up in the wit and whimsy of the fable. It charmingly reminds us that sometimes the most exciting dreams to pursue are the ones others have inspired in us.”



Go Behind the Scenes with the Characters of ENCHANTED

Ever wonder what the actors and actresses in a film think about their roles and the people they work with? Here's your chance to find out – direct from Amy Adams (Giselle), Idina Menzel (Nancy), James Marsden (Prince Edward), Kevin Lima (director), Carrie Underwood (vocalist on *Ever, Ever After*), and Patrick Dempsey (Robert).

AMY ADAMS on James Marsden



His voice is just so beautiful and so perfect for this role, and they didn't even know he could sing! He is so great at comedy – I don't think people have really seen him do comedy before, so I really think they are going to be surprised and excited at how funny he is. When I'm in a scene with him, I'm really glad when

the cameras are off of me so that I can actually laugh, because he makes me laugh hysterically.

We sing. We dance. We romance. There's action. There's Central Park. There's New York. There's tons of visual effects.

KEVIN LIMA on Pip



Every Disney princess has a group of friends that follow her through the world. And ours is no different. She has Pip. Pip is her best friend, her confidant. In fact, he's kind of like a father figure to her. And Pip looks like your typical, cute little Disney chipmunk, but when he opens his mouth he actually speaks like an Italian mobster. When he talks it's like, (*mobster accent*) "Giselle, you know, we're family, and family takes care of family." So it plays that little juxtaposition of a cute little guy, with a whole lotta attitude.



PATRICK DEMPSEY on his character, Robert:

The movie is about true love. There is also a nice balance – it's an escape movie, it's fun and contemporary, and in some ways, it's a little

old-fashioned with singing numbers. It's quirky and fun and challenging. And I didn't sing, but I think that helps the audience be able to relate to my character – because they probably don't sing that much in their lives either!



IDINA MENZEL on filming in New York City

The other night James and I shot a scene at 3 in the morning in the middle of Times Square, running in these costumes, and I made somebody take a picture because all the years of me living here – I grew up in Long Island, and as a child came to New York City to see theater with my parents and have dinner and have always seen movies being shot in New York, and you always wonder what's going on. For the first time it was *me* with this great-looking, wonderfully talented actor running through the middle of Times Square shooting a big movie with big lights and all the people stopping to see what's going on.



JAMES MARSDEN on director Kevin Lima

Kevin is a great director in the sense that he's almost like his own animated character. He's an artist who comes from the animation world and he walks around with this undying look of enthusiasm on his face that doesn't ever, ever falter. He has a cheerfulness about him that radiates throughout the whole set and sets a wonderful tone for the work. You can see how much enthusiasm he has for the characters and for the story and it's what he loves to do. You can tell just by watching him, so it's been a pleasure to work with him.



CARRIE UNDERWOOD on the message of *Ever, Ever After*



Ever, Ever After is about things working out, and if you let yourself believe in a little bit of magic, you can have your happily ever after. We all want to believe in the things that we used to when we were kids, and that there really is magic out there. It's just a fun song about how

we need to let ourselves believe in love and happily ever after.

Now, imagine that you're in the film. Pick a character and write your thoughts about what it was like to work with him or her, and how the setting affected your scene together. You can even act like a director and describe how you might have changed a scene!

Pretend You're ENCHANTED

GAME

Welcome to My World

Which **Enchanted** character would you want to be?

Preparation: Any number of players can participate. Read the descriptions of the **Enchanted** characters that appear below and ask each participant to decide which character he or she would like to be. Participants should not share their choice with the other players. It's okay if more than one person chooses the same character — it's all about how each player interprets the character during the game! Write numbers on scraps of paper and draw to determine the order of play. Participants who draw odd numbers are on one team; participants who draw even numbers are on the other team. One player from each team volunteers to serve as timer (a kitchen timer is great, but a wristwatch will do).

THE CAST OF CHARACTERS



Giselle

The perky princess who transforms herself from a delightful but dazed time traveler into a modern New York woman.



Robert

The sober-minded, sensible single father who learns how to have fun.



Prince Edward

The brave and idealistic prince who doesn't have a clue about life in the modern world.



Queen Narissa

She's over the top; she's manipulative; she's the character you love to hate.



Nathaniel

Every despot needs a trusty henchman, and that's the role the oh-so-clever (and dare we say, sneaky?) Nathaniel plays for Queen Narissa.



Pip

Okay, so he's a chipmunk — but he's also smart, sassy, perceptive, and very agile, too.

Play: Each player has one minute to portray his or her character through actions, words, and sounds well enough so that his or her teammates can identify the character. If the teammates guess the character, they score one point. Play continues until all players have had a turn. The team with the most points wins.

For a variation on the game, allow members of the guessing team to ask questions of the character as they attempt to determine the identity.

TALK IT OVER

In My Shoes

What couldn't you live without — even in an **Enchanted** world?



When we first meet Giselle in **Enchanted**, she lives in a quaint and cozy tree house and her best friends are bluebirds, bunnies, and a talking chipmunk named Pip. Prince Edward lives in a magnificent castle and hunts trolls for his amusement.

Imagine that you just received word that you'll be trading places with Giselle or Edward and will be whisked away to Andalasia. You have just 10 minutes to pack. What would you take with you, and why?

ACTION ACTIVITY

Guess Who's Back!

Talk about an **Enchanted** identity crisis...

Mix up the [character cards](#) attached to the *Queen Narissa's Got You Now!* game and place them face down on the table. Ask someone who doesn't plan to participate to tape or pin a card to the back of each player. (If everyone wants to play, two players can take turns assigning the identities.)

Participants must guess which character is on their back by asking questions of their fellow players. (And remember, no mirrors are allowed!)



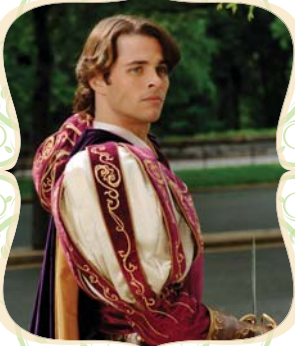
Visit the ENCHANTED Island!

Amazing Manhattan

You can save the princess. (Okay, not really...but we know Giselle would appreciate some help!)

Preparation: This is a game for 2-4 players. You will need a pair of dice or you can use a coin, different colored buttons (or other small objects) to use as the playing pieces, and the attached [game board](#). The characters in this game are:

Play: In this game, Prince Edward and the others must navigate their way through Manhattan and rescue Giselle, dodging Queen Narissa's roadblocks along the way. Begin by rolling the dice to determine the order of play. The player with the highest score goes first, then the player with the next highest score, and so on. Players roll the dice and move through the squares, trying their best to avoid the squares that will set them back...or worse! The player who reaches Giselle first wins.



Prince Edward – The brave and dashing, although not too city-savvy, prince.



Robert – He knows the city, but that may not give him an edge.



Morgan – She's just a kid, but she knows Giselle and her dad could be a great team.



Pip – He may be small, furry, and squeaky, but he's feisty and loyal, too.



More Manhattan Madness

Where would you go first if you popped out of a manhole in the middle of Manhattan?

Now it's time for all you armchair tourists to get into the act. You probably wouldn't want to begin with a quick trip through the sewer system like the characters in *Enchanted*, but Manhattan is a great place to visit!

Here are just a few of the places that can't be missed:



The Statue of Liberty



The United Nations



Wall Street



Greenwich Village



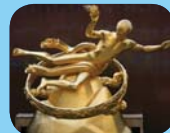
Chinatown



Fifth Avenue



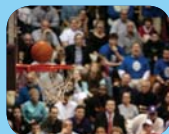
Times Square



Rockefeller Center



The Metropolitan Museum of Art



Madison Square Garden

Where would you want to go during a mad Manhattan weekend? Why? Combine your ideas and plan your itinerary. Then you can go online and take a virtual trip (search under Manhattan Tourist Attractions), or you can book your tickets and do it for real!

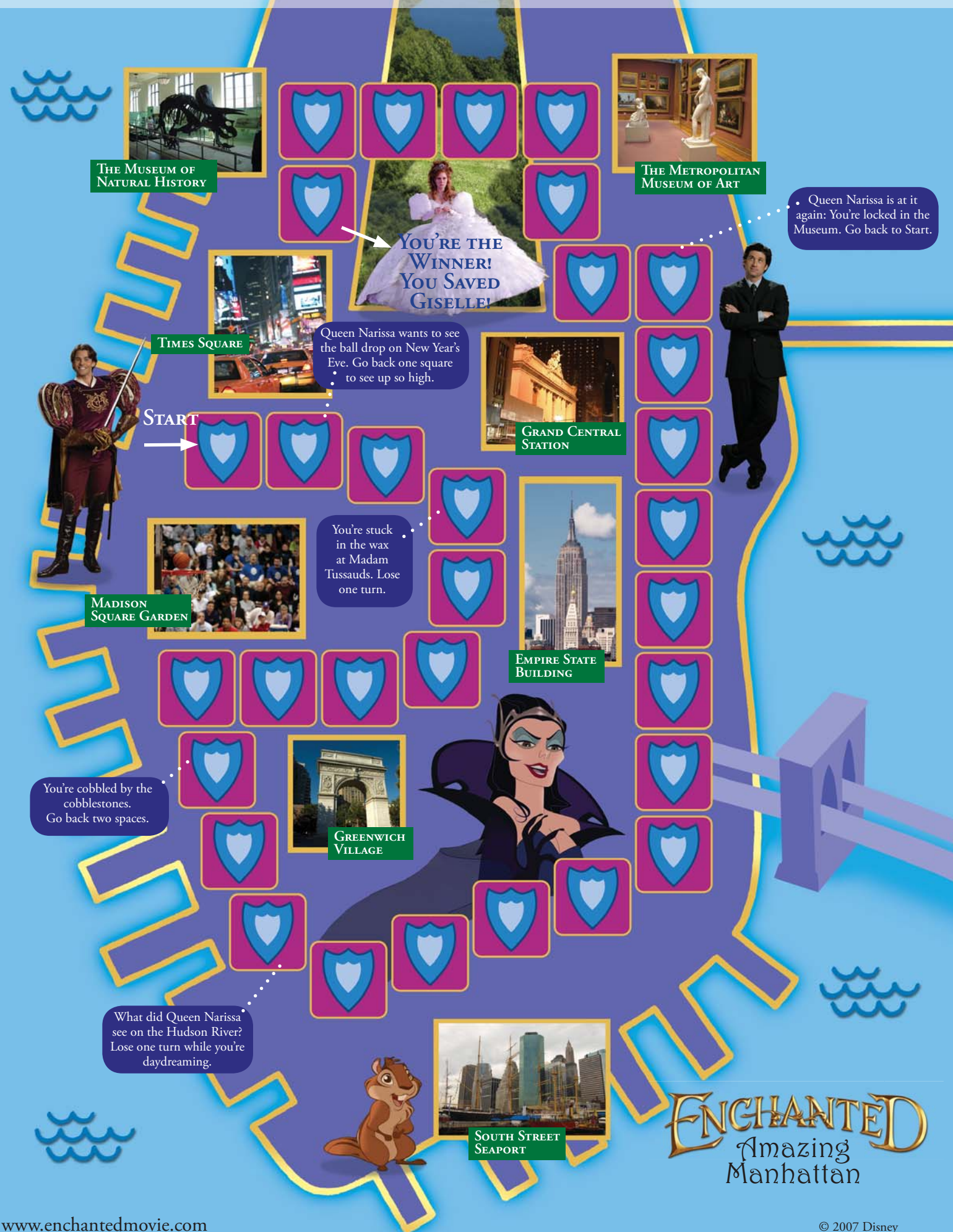


Bumper to Bumper

It's rush hour in Manhattan, but you've got to get moving if you're going to save Giselle!



The more the merrier for this outdoor challenge! Divide into two teams and line up shoulder to shoulder, about 25 feet apart. The team that starts picks a player from the opposing team and calls out, "Giselle's in trouble. Send [name] on the double!" The player whose name is called runs across and tries to break through the line of the opposing team. If the player is successful, he or she picks a person to join the other team. If the player was unable to break the line, he or she joins that team. Play continues until all players are on the same team.



ENCHANTED

Can You Outsmart Queen Narissa?



Fairy Tale Villains *Who is the wickedest one of them all?*

Here are some scenes from *Enchanted* to get you started.
Can you remember what Queen Narissa is plotting?

As a group, make a list of all the evil tricks you saw Queen Narissa try in *Enchanted*. Then, try to top Queen Narissa's devilish doings by describing the dastardly deeds of villains in other fairy tales and Disney movies. Take a vote to decide on the wickedest one of them all.



You're Enchanted

*Can you stay **Enchanted** and escape the magic spell?*

Preparation: No preparation is necessary for this classic game of freeze tag, which can accommodate any number of participants. It's a great way to burn off energy outdoors on a bright autumn afternoon.

Play: Select one player to "receive" the magical powers and try to tag the other players. Each player who is tagged must freeze in place until another player taps them and says "You're Enchanted," at which point that player can move again. The player with the magical powers must freeze all the other players in order to win the game.



Queen Narissa's Got You Now!

*A matching game with a magical, **Enchanted** twist...*

Preparation: This is a game for 3-4 players. To prepare to play, make two copies of the attached [character cards](#) and cut out the cards.

Play: Shuffle the cards and deal five cards to each player. The player to the dealer's right begins by asking any other player for a card that matches one of the cards in his or her hand. If the player holds the requested card, he or she must give it up, and the original player asks any other player for another matching card. The original player continues to ask for matches until a player is unable to provide a matching card. At that point, if the other player has a Queen Narissa card he or she may play it, saying "Queen Narissa's got you now!" as he or she lays it face up on the table. The original player must accept the penalty (drawing one or two cards, or losing a turn) stated on the card. If the player cannot provide a matching card and does not have a Queen Narissa card, the original player draws one card from the deck and play continues to the right.

Note: Players should lay each matching pair they have or acquire face up in front of them. Once a matched pair of cards is on the table those cards are out of play and count toward the player's final score. Queen Narissa cards that have been played also are out of play.

The winner is the first person to "match out" all of his or her cards.

Don't Get Dis-
ENCHANTED
Foil the Evil Queen!

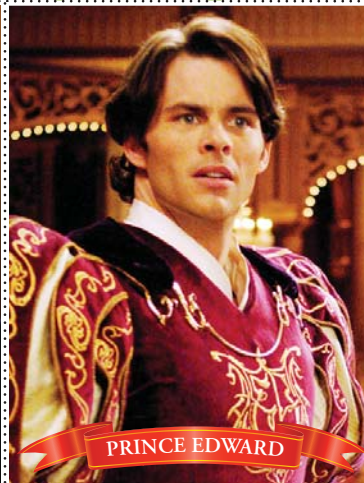
Queen Narissa's Got You Now!
*A matching game with a magical, **Enchanted** twist...*



GISELLE



ROBERT



PRINCE EDWARD



PIP



MORGAN



NATHANIEL



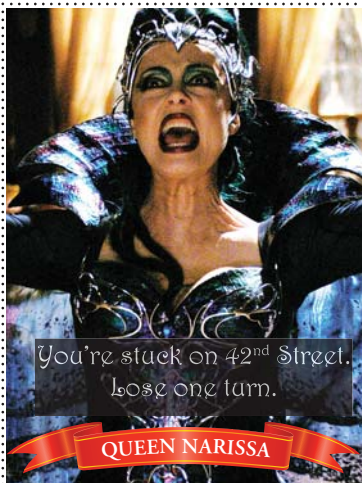
NANCY



BLUEBIRDS



BUNNY



QUEEN NARISSA



QUEEN NARISSA



TROLL

Your Own ENCHANTED Evening



Create Your Own Enchanted Adventures

You've seen what can happen when you're *Enchanted*. Now it's your turn to be part of the Disney creative team, using the [character cards](#) attached to the *Queen Narissa's Got You Now!* game, cut them out, and tape or glue each of them to a popsicle stick to make puppets. Then act out a new *Enchanted* adventure with this colorful cast of characters!



Here are some story ideas to help you get started:

★ Giselle (in her fairy tale clothes)

asks a New York City policeman on horseback, where to find her own steed so she can rush to the castle.

- ★ Queen Narissa and Prince Edward race to get through a subway station turnstile in order to catch a subway that they both think is "alive."
- ★ Standing in front of the lions at the New York City Public Library, Prince Edward wants to mount them and use them to rescue his princess.



One Enchanted Evening... *Off to the Enchanted Ball*

How good is YOUR memory? You're about to find out!

Preparation: All you need is a group of friends and space to form a circle in order to play this game. You can play the game by itself or incorporate it into the fun at your masquerade party.

Play: Form a circle and pick one person to be recorder, keeping a list of the items named. The first player starts by saying, "I'm going to the *Enchanted* ball, and I'm bringing [insert name of a fairy tale item — anything from a glass slipper, to a magic mirror, to a poison apple, or a troll]." The next person in the circle repeats the statement, and adds another item to the list. As the game continues, any player who cannot repeat the entire list accurately before adding a new item is eliminated. The winner is the last person standing.

Note: As an alternative to fairy tale items, players can name characters from Disney movies.



It's Party Time! *(fun for friends and family)* *Evil queens, princes, and trolls... the more the merrier!*

This is a great way to cap off an afternoon at the movies, enjoying the fun and action of *Enchanted*. Or you can throw a party to set the mood for your trip to your local theater.



When was the last time you went to a masquerade party? The cast of characters from *Enchanted* provides lots of inspiration for some good old-fashioned family fun in the form of a party. Invite everyone you know — young and old alike. There's only one rule: Everyone must wear a fairy tale costume, preferably one based on a character from *Enchanted*. There's an evil queen and her henchman, a dashing prince and a beautiful princess; there are trolls, forest creatures, and a sassy chipmunk; and there are died-in-the-wool New Yorkers — including a divorce attorney and an angry couple who can't agree on anything.

To help the kids with their costumes, consider setting up a face-painting station. (You can purchase face paints at most craft and party stores.) Use the paint to help transform young partygoers into woodland creatures — black circles around the eyes for raccoons, for example, pink noses on bunnies, and lots of whiskers for everyone.

As for the food, there are all kinds of options: You can make it a pot luck dinner, with everyone bringing a dish to share. You can focus on desserts. Or you can provide an array of finger foods for guests to munch on as they mix up some special *Enchanted* treats during the party. (A [recipe page](#) is attached.)

What's Cooking? ENCHANTED Recipes!

(recipes to share with your friends)

*There can never be too many cooks in the kitchen
when magic is on the menu!*

Add to the fun. Whether it's a full-fledged pot luck or an array of desserts, add to the ambiance by asking guests to give a new name to their dish that's in keeping with the *Enchanted* theme. To make your event more memorable, ask guests to bring copies of their recipe to share. Here are a few ideas to get you started!



Big Apple Bites

A sweet and munchable treat. Adjust quantities as necessary, allowing approximately one small apple per guest.

Apples (Fuji, Gala, or Granny Smith are good choices)

Semi-sweet or milk chocolate

Chopped nuts

Fondue forks, bamboo skewers, toothpicks, or swords!

- * Cut the apples into bite-sized chunks and place on a tray.
- * Place chopped nuts in a serving dish.
- * Melt semi-sweet or milk chocolate over low heat and keep warm in a chafing dish or fondue pot, or place in a heat-proof dish on a warming tray.
- * Guests spear an apple chunk, then dip it in the chocolate and, if desired, the nuts.
- * Serve with lots of napkins to avoid drips!

Magic Potions

A fruity and refreshing punch to pep up your party.

- 1 12-oz. can frozen pineapple juice, thawed
- 2 10-oz. boxes frozen strawberries in syrup, thawed
- 2 pints strawberry ice cream, softened
- 2 liters lemon-lime soda, chilled

- * Combine the pineapple juice, strawberries, and 1 pint of ice cream and blend until smooth. Put in a chilled punch bowl and add the lemon-lime soda. Float the remaining ice cream on top.
- * Makes about 18 cups.



Giselle's Royal Jewels

Colorful and healthful munchies for kids of all ages.

Red and green grapes

Cantaloupe

Honeydew melon

Watermelon

Or any other fresh fruit that's in season

- * Using a small melon-baller or a teaspoon, scoop out bite-sized pieces of melon.
- * Combine with the grapes and serve in a decorative bowl. Provide toothpicks to spear the fruit.



Manhattan Mix-Up...It's Sure Not Andalusia!

Life is turned upside down for Giselle — and for Edward, her would-be rescuer — when they are transported from their fairy tale kingdom of Andalusia into the gritty, chaotic streets of New York. They don't know who's who or what's what! It's an altogether confusing state of affairs in *Enchanted*.

You can help them sort things out by finding the familiar objects hidden in the picture — beginning with our two lovebirds themselves!

Giselle	A bunny
Edward	A mirror
Pip	A tree house
Nathaniel	The prince's horse
An ogre	A hoop skirt
A bird's nest	A sword
A pair of bluebirds	A rope



ENCHANTED

Activity

Queen Narissa Casts a Spell

Giselle and Edward thought they were confused when they popped out of that manhole in mid-town Manhattan, but that was nothing compared to the chaos the evil Queen Narissa stirred up when she got busy in the Big Apple.

She's scrambled everything up so much that no one — not even Robert (and he was born and raised here, for pumpkin's sake!) — can figure out what's what or where's where.

You can help this *Enchanted* trio by straightening out the confusion Narissa has caused. Unscramble the names of the places pictured below so they can pull themselves back together and outsmart that nasty Queen Narissa.



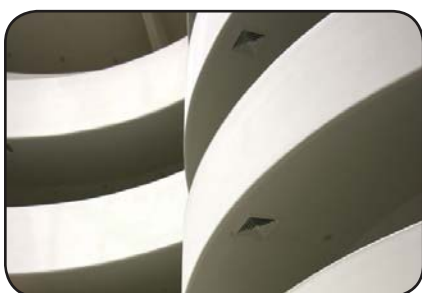
1. YLNOOKRB GEDIBR



2. MEPEIR ATTES GINULBID



3. NETAST SLADIN YFRER



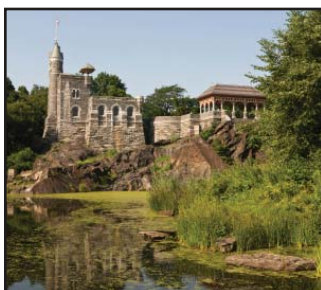
4. MEGGHENGUI USEUMM



5. ATTUES FO TREYBIL



6. WRASTYERRB DLIESF



7. REEDELBEV LASTEC



8. HET DENTIU ASONTIN



9. AMIDNSO SEQAUR NEGRAD



10. CILLNON
TRENCE

Answer Key

(1) Brooklyn Bridge; (2) Empire State Building; (3) Statue of Liberty; (4) Guggenheim Museum; (5) Lincoln Center; (6) Strawberry Fields [Central Park]; (7) Belvedere Castle; (8) United Nations; (9) Madison Square Garden; (10) Lincoln Center

ENCHANTED

Let's Talk It Over

TALK
IT
OVER

In My Shoes

What couldn't you live without — even in an *Enchanted* world?



When we first meet Giselle in *Enchanted*, she lives in a quaint and cozy tree house and her best friends are bluebirds, bunnies, and a talking chipmunk named Pip. Prince Edward lives in a magnificent castle and hunts trolls for his amusement.

Imagine that you just received word that you'll be trading places with Giselle or Edward and will be whisked away to Andalasia. You have just 10 minutes to pack. What would you take with you, and why?

TALK
IT
OVER

More Manhattan Madness

Where would you go first if you popped out of a manhole in the middle of Manhattan?

Now it's time for all you armchair tourists to get into the act. You probably wouldn't want to begin with a quick trip through the sewer system like the characters in *Enchanted*, but Manhattan is a great place to visit!

Here are just a few of the places that can't be missed:



The Statue of Liberty



The United Nations



Wall Street



Greenwich Village



Chinatown



Fifth Avenue



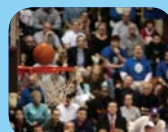
Times Square



Rockefeller Center



The Metropolitan Museum of Art



Madison Square Garden

Where would you want to go during a mad Manhattan weekend? Why? Combine your ideas and plan your itinerary. Then you can go online and take a virtual trip (search under Manhattan Tourist Attractions), or you can book your tickets and do it for real!

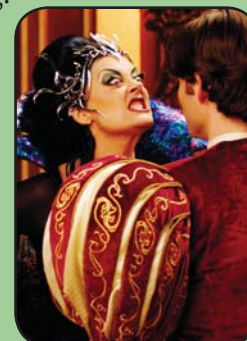
TALK
IT
OVER

Fairy Tale Villains

Who is the wickedest one of them all?

Here are some scenes from *Enchanted* to get you started.
Can you remember what Queen Narissa is plotting?

As a group, make a list of all the evil tricks you saw Queen Narissa try in *Enchanted*. Then, try to top Queen Narissa's devilish doings by describing the dastardly deeds of villains in other fairy tales and Disney movies. Take a vote to decide on the wickedest one of them all.



ENCHANTED

Jump into Action



Bumper to Bumper

It's rush hour in Manhattan, but you've got to get moving if you're going to save Giselle!



The more the merrier for this outdoor challenge! Divide into two teams and line up shoulder to shoulder, about 25 feet apart. The team that starts picks a player from the opposing team and calls out, "Giselle's in trouble. Send [name] on the double!" The player whose name is called runs across and tries to break through the line of the opposing team. If the player is successful, he or she picks a person to join the other team. If the player was unable to break the line, he or she joins that team. Play continues until all players are on the same team.



You're Enchanted

*Can you stay **Enchanted** and escape the magic spell?*

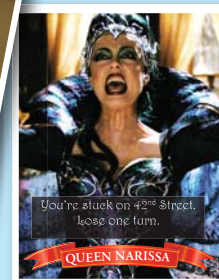
Preparation: No preparation is necessary for this classic game of freeze tag, which can accommodate any number of participants. It's a great way to burn off energy outdoors on a bright autumn afternoon.

Play: Select one player to "receive" the magical powers and try to tag the other players. Each player who is tagged must freeze in place until another player taps them and says "You're Enchanted," at which point that player can move again. The player with the magical powers must freeze all the other players in order to win the game.



Guess Who's Back!

*Talk about an **Enchanted** identity crisis...*



Mix up the [character cards](#) attached to the *Queen Narissa's Got You Now!* game and place them face down on the table. Ask someone who doesn't plan to participate to tape or pin a card to the back of each player. (If everyone wants to play, two players can take turns assigning the identities.) Participants must guess which character is on their back by asking questions of their fellow players. (And remember, no mirrors are allowed!)

