

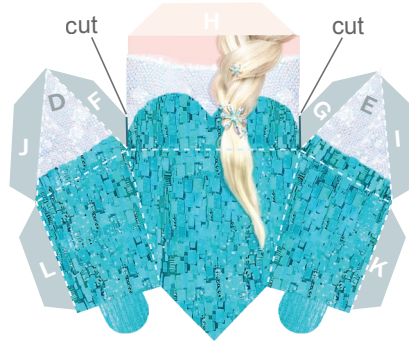
Elsa Papercraft



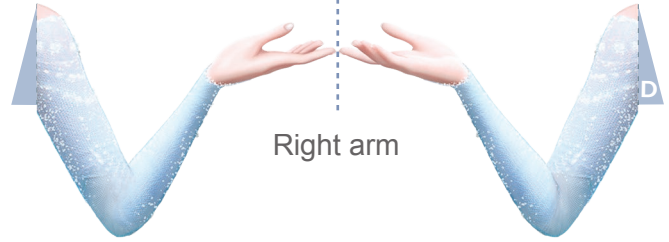
Torso



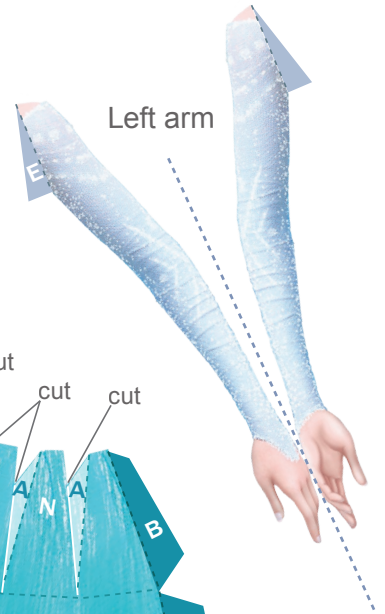
Back



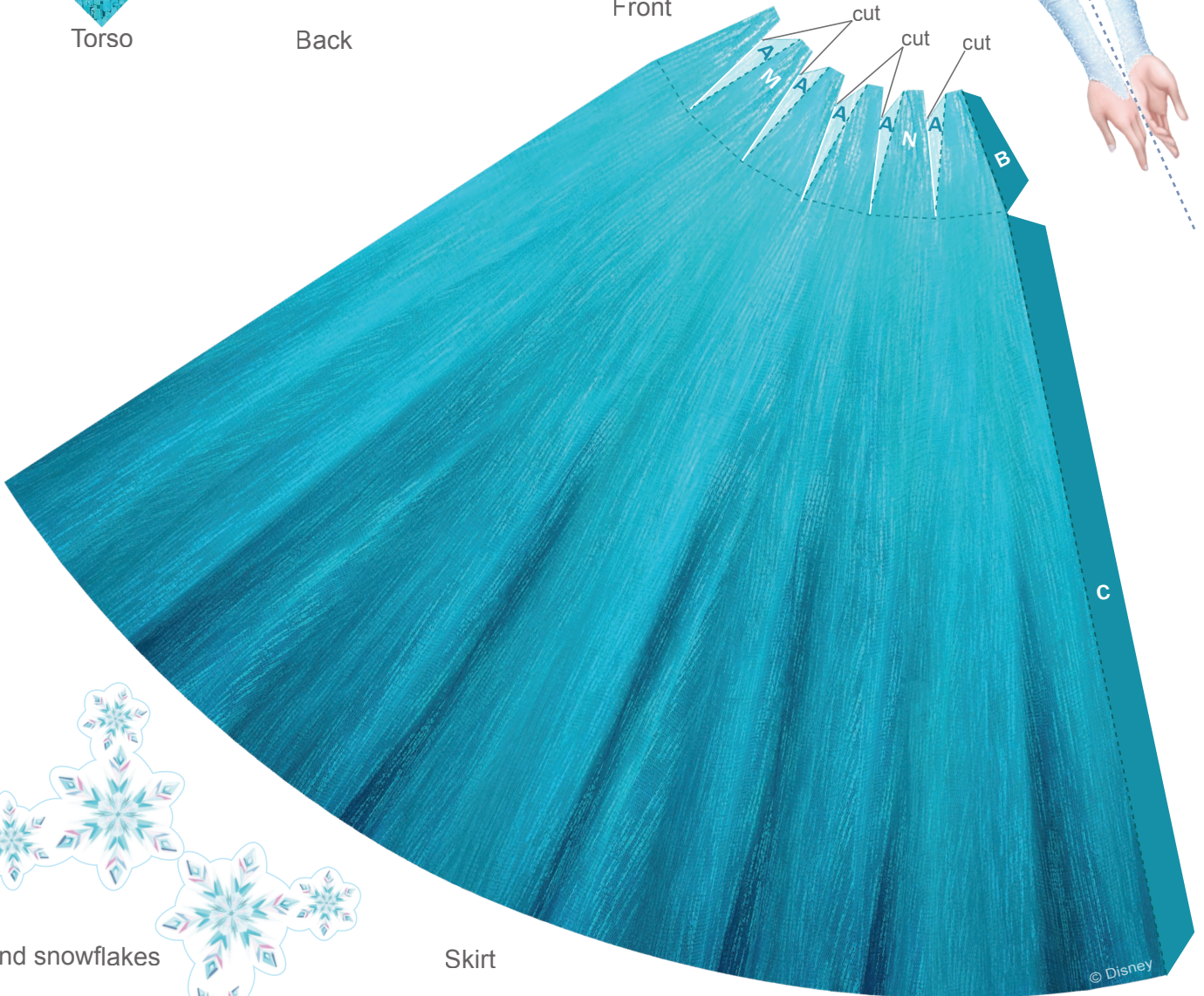
Front



Right arm



Left arm



Skirt



Hand snowflakes



Elsa Papercraft

Instructions

1. Print the template on regular paper or cardstock. Cut out each piece with a craft knife or scissors. Do not cut along the dashed lines -- this is where you will fold the paper.
2. Line up Elsa's back with her torso and glue them together so the design is two-sided. After the glue has dried, fold the bottom part of Elsa's torso towards you along the blue dashed line. Then, fold Elsa's face away from you along the gold line across her shoulders.
3. Take Elsa's chest piece and fold along each dashed line. Make each fold away from you. Glue the G tab and F tab to the back, white side of Elsa's chest.
4. Spread glue on the H tab of Elsa's chest and press it into place on the H area on Elsa's torso. Make sure her shoulders are lined up correctly.
5. After the glue dries, add glue to the I, J, K, and L tabs and press them into place. Hold the pieces together until the glue dries. You may need to use a pen or pencil inside her chest area to position the tabs just right.
6. Fold each of Elsa's arms and glue them so the design is two-sided. Make sure they are lined up before the glue dries. Attach the arms to each side of Elsa's body under each shoulder by gluing the E tab to the E area and D tab to the D area.
7. Cut slits in the top of the skirt along the white lines, opposite of where you fold each A tab. Fold each of the dashed lines at the top of the skirt and each A tab away from you. Starting from left to right with the purple side of the skirt facing you, glue each A tab to the back of the skirt piece next to it to create pleats.
8. When you are finished gluing the A tabs you may find it easier to glue the C tab to the inside of the skirt before gluing the final B tab pleat.
9. Attach Elsa's completed torso to her skirt by gluing the white side of the tabs at her waist to the top of the skirt over the areas labeled M and N. The crease on the skirt should be in the back.
10. Fold the snowflakes and glue them so the design is double-sided. Glue them to the very end to Elsa's outstretched palm.
11. Lastly, you can add Elsa's sparkly cape by using blue glitter tulle about 9 inches long and 5 inches wide. Cut the tulle into the shape of a balloon with one end 2 inches wide, and the other end 5 inches wide, keeping it 9 inches long from one end to the other. Glue the edges of the 2 inch end around the top edge of her dress along her back and sides under the arms.